

# Metrix Optical and X-ray Inspection

## MOXI

Cost Effective X-ray Inspection for the Laboratory or Shop Floor



### Capable of inspecting objects up to:

- 400mm (diameter)
- 500mm (high)
- 30kg (max weight)

### Resolution:

Typical X-ray resolution capability:

- 200µm (Linescan)
- 50µm (high resolution DR panel)

### Affordable Industrial X-ray Inspection

The MOXI series of x-ray inspection systems offer a highly configurable and cost effective radiographic tool for QA, R&D and on-line facilities.

Dependent on the Customer's needs and budget, MOXI can be configured with a range of x-ray generators, detectors and software options to provide a plug-and-play system.

Targeted at low volume production inspection or laboratory applications MOXI can typically handle up to 20 inspections per hour in 2D mode. Software upgrades allow provide the ability to obtain computed tomography (CT) images for more detailed inspection

MOXI is based on a modular design which allows Metrix to configure the system to meet your specific application. By selecting the most appropriate x-ray generator, detector and software components ensures that an optimum, cost effective solution is delivered.

Designed primarily for the inspection of castings, complex fabrications and small assemblies, the MOXI system allows customers to gain the benefits of x-ray inspection facilities quickly, simply and safely in a cost-effective integrated turn-key solution.

### UNDERSTANDING YOUR NEEDS AND PROVIDING SOLUTIONS

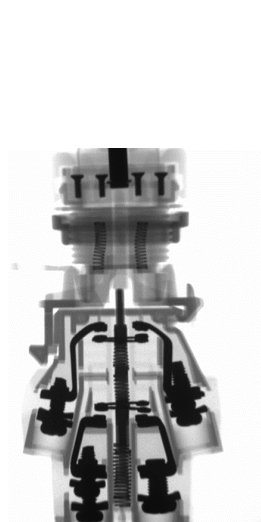
With over 25 years experience in the x-ray and industrial inspection sectors, the team at Metrix NDT work with customers to find the right solution to meet their specific needs. For further information:

**Call us today: +44 (0) 1509 266 701**

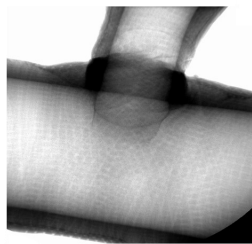
# Metrix Optical and X-ray Inspection

## MOXI

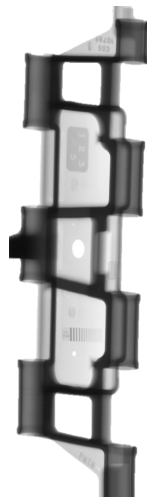
**Cost Effective X-ray Inspection for the Laboratory or Shop Floor**



Electrical "Joy Stick"



Jointed water hose



Cast Track Link



Steel casting with enhanced regions of porosity

### Generator

Options include: 40kV— 200kV @1mA, (FS 0.8mm x 0.8mm)  
40kV— 170kV @1.2mA (FS 0.8mm x 0.8mm)  
40kV— 100kV @3mA (FS 0.8mm x 0.8mm)  
30kV— 80kV @ 1mA (FS 0.033mm x 0.033mm)

### Detector

Resolution options include:

*Line Scan:* 200µm, 400µm or 800µm pixel pitch  
(Single or dual energy)

*Area (DR) panels:* 50µm, 100µm, 200µm pixel pitch  
(Various panel sizes)

### Software

Basic: MetVIEW  
Options: Data Analysis  
Application specific filters  
Computed Tomography

### Physical

Dimensions: 1500mm(W) x 800mm(D) x 1850mm(H)  
Weight: 980kg (for 170kV system)

### Sample Handling

Rotation: 360° (continuous)  
Vertical: 500mm  
Sample weight: 30 kg max  
Sample size: 360mm (dia) x 500mm (high)

### Environmental

Operating temp.: 5°C to 40°C  
Storage: -5°C to 60°C  
Humidity: 5% to 95% (non-condensing)

### Safety

Conforms to IRR17 and CE compliant

## UNDERSTANDING YOUR NEEDS AND PROVIDING SOLUTIONS

With over 20 years experience in the x-ray and industrial inspection sectors, the team at Metrix NDT works with customers to find the right solution to meet their specific needs. For further information:

**Call us today: +44 (0) 1509 266 701**