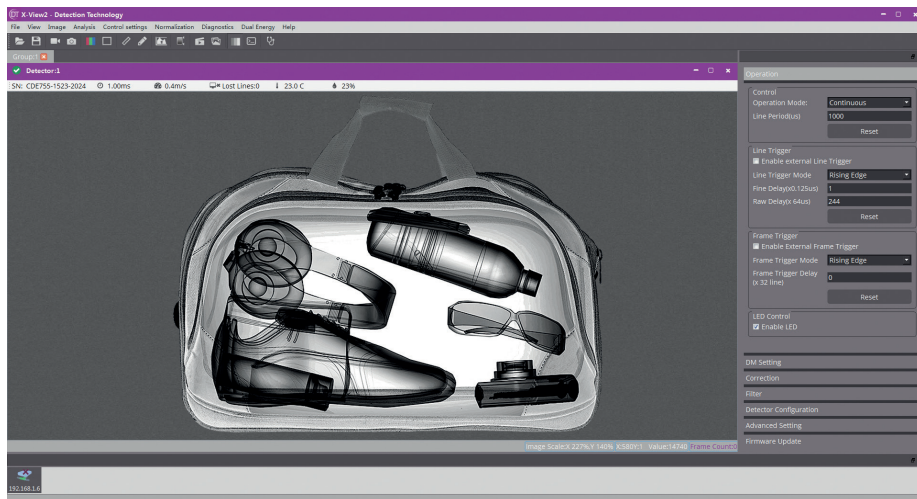


X-View2

Software Development Kit



X-View2 Software Development Kit

is software for controlling all the digital platform detectors of DT. It provides easy-to-use and easy-to-learn user interface for detector controlling and image grabbing.

X-View2 application software supports multi-detector and multi-view systems.

Multiple image enhancement functions of X-View2 enable fast and easy processing of the grabbed images. Simplified automatic troubleshooting procedure significantly shortens the time needed for equipment maintenance.

HIGHLIGHTS

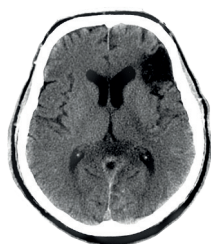
- Control detector parameters
- Grab image data from the detector
- Processing and analyzing of grabbed images
- Multi-detector and multi-view support
- Enhanced image analysis tools
- Automatic troubleshooting procedure
- Dual-energy algorithms
- Advanced non-linear calibration
- Working modes:
 - Gigabit Ethernet
 - Camera link

X-VIEW2 SDK INCLUDES

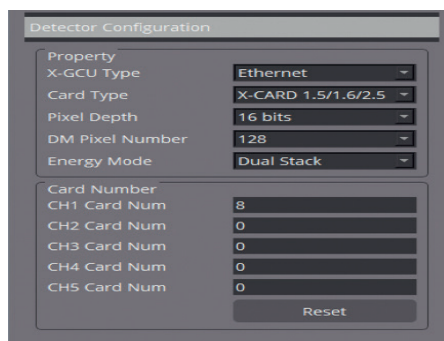
- X-View2 software
- X-Lib demonstration software with source code
- X-Lib software library

SUPPORTED DT DETECTOR SUBSYSTEMS

- X-GCU and Digital X-cards
- X-Scan Series



KEY FEATURES



Detector configuration

- Easy to set detector module configuration in each X-GCU channel
- Set gain values and test pattern mode of each detector module
- Read properties of detector modules

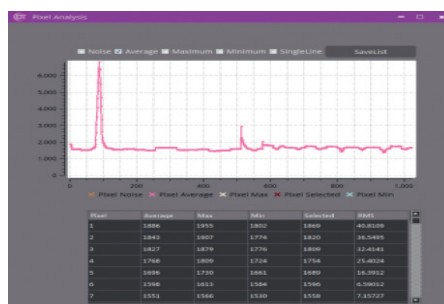
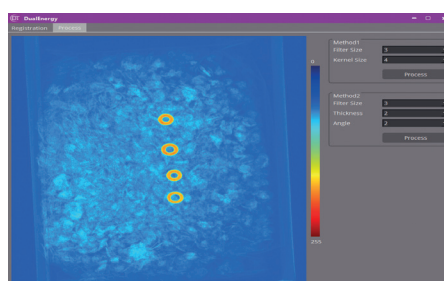


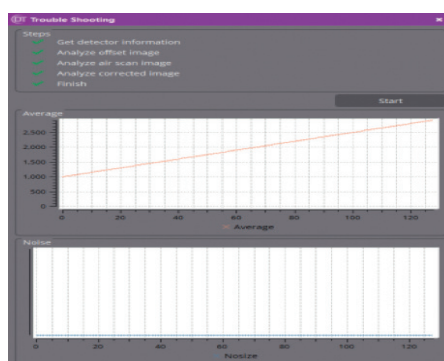
Image analysis

- Pixel analysis for rows and columns
- Noise and average values
- Minimum and maximum values



Dual-energy process

- Two dual-energy combination methods that adopt different algorithms
- Based on effective atomic number (Z_{eff}) or on contrast differences



Troubleshooting

- Automated troubleshooting procedure
- View detector information
- Analyze offset image
- Analyze air-scan image
- Analyze corrected image
- Automatic generation of diagnostics report, including sample images

Device	Vol1	Vol2	Vol3	Vol4	Vol5	Vol6	Vol7	Hum	Tem
DM52	2.46	✓ 21.87	✓ 5.25	✓ 1.20	✓ 5.05	✓ 3.30	✓ 4.11	✓ 52.16	✓ 28
DM53	2.45	✓ 21.82	✓ 5.26	✓ 1.21	✓ 5.04	✓ 3.28	✓ 4.11	✓ 52.38	✓ 28
DM54	2.47	✓ 21.56	✓ 5.26	✓ 1.20	✗ 12.80	✗ 0.00	✗ 8.95	✓ 52.03	✓ 28
DM55	2.45	✓ 21.56	✓ 5.24	✓ 1.19	✓ 5.05	✓ 3.32	✓ 4.13	✓ 52.02	✓ 28
DM56	2.46	✓ 21.50	✓ 5.27	✓ 1.20	✓ 5.00	✓ 3.31	✓ 4.12	✓ 50.97	✓ 28
DM57	2.46	✓ 21.45	✓ 5.27	✓ 1.19	✓ 5.03	✓ 3.30	✓ 4.12	✓ 51.40	✓ 28
DM58	2.45	✓ 21.16	✓ 5.26	✓ 1.19	✓ 5.04	✓ 3.29	✓ 4.12	✓ 51.38	✓ 28
DM59	2.46	✓ 21.19	✓ 5.27	✓ 1.20	✓ 5.05	✓ 3.30	✓ 4.12	✓ 51.69	✓ 29
DM60	2.46	✓ 21.11	✓ 5.30	✓ 1.19	✓ 5.06	✓ 3.31	✓ 4.13	✓ 52.04	✓ 29
DM61	2.46	✓ 21.07	✓ 5.25	✓ 1.20	✓ 5.01	✓ 3.29	✓ 4.12	✓ 50.91	✓ 29
DM62	2.45	✓ 21.02	✓ 5.24	✓ 1.19	✓ 5.09	✓ 3.30	✓ 4.12	✓ 52.03	✓ 28
DM63	2.46	✗ 20.94	✓ 5.27	✓ 1.20	✓ 5.04	✓ 3.31	✓ 4.12	✓ 51.57	✓ 30
DM64	2.47	✗ 20.92	✓ 5.29	✓ 1.19	✓ 5.06	✓ 3.31	✓ 4.13	✓ 50.82	✓ 28

Health check

- Voltage, humidity and temperature check of each X-GCU control unit and Digital X-Card detector modules

SYSTEM REQUIREMENTS

Supported operating systems: Windows7/8.1 (32/64-bit), Ubuntu12.04 (32/64-bits)
Supported compilers: Microsoft Visual C++ 2008, Microsoft Visual C++ 2010, Microsoft Visual C# 2010, GCC 4.6.3

DETECTION TECHNOLOGY PLC

Elektroniikkatie 10
 90590 Oulu Finland

contact@deetee.com
 www.deetee.com

Tel. +358 20 766 9700

All images © Detection Technology